

Health and Safety Policy



M&W (WOOLSTON)
ELECTRICS LTD
ELECTRICAL ENGINEERS
AND CONTRACTORS

The Old Black Bear, 502 Knutsford Road, Warrington, Cheshire, WA4 1DX

Tel: 01925 256 840 / Fax: 01925 256 841

REVIEWED BY THE MANAGING DIRECTOR

Contents

1.0 INTRODUCTION

2.0 GENERAL STATEMENT

3.0 ORGANISATION AND RESPONSIBILITES

- 3.1 Structure of Company Personnel – for effective health and safety management
- 3.2 Managing Director / Safety Director
- 3.3 Contracts Manager
- 3.4 Safety Advisor
- 3.5 Administration Staff
- 3.6 Foremen Electricians
- 3.7 Drivers
- 3.8 All Employees including Sub Contractors

4.0 ARRANGEMENTS

PROCEDURES

- 4.1 Risk Assessments 1
- 4.2 Control of Substances 2
- 4.3 Manual Handling 3
- 4.4 Safe Systems of work 4
- 4.5 Purchase and Hiring equipment 5
- 4.6 Health and Welfare facilities 6
- 4.7 Information, Training, Supervision and Competency 7
- 4.8 Consultation communication with Employees 8
- 4.9 Display Screen Equipment Assessing & Monitoring 9
- 4.10 Plant and Equipment including Portable Appliance Testing 10
- 4.11 Working at height 14
- 4.12 Safe Use of Ladders 15
- 4.13 Mobile Scaffolding Tower 16
- 4.14 Roof Works 17
- 4.15 Drivers of Cars and Vans and their Responsibilities 18
- 4.16 Electricity 20
- 4.17 Lead 21
- 4.18 Asbestos 22
- 4.19 Vibration 23
- 4.20 Mobile Phones including Satellite Navigation Systems 24
- 4.21 Young Persons 25
- 4.22 Visitors to site 26
- 4.23 Lone workers 28
- 4.24 Protection of the public 29
- 4.25 Contractor Control 30
- 4.26 PPE 21
- 4.27 Respiratory protection 32
- 4.28 Noise 34
- 4.29 Drugs and alcohol 35
- 4.30 Dermatitis 36
- 4.31 Leptospirosis (Weils Disease) 37
- 4.32 Psittacosis 38
- 4.33 Tetanus 39
- 4.34 HIV or Hepatitis 40
- 4.35 Stress 41
- 4.36 Smoke free Policy including e-Cigs 42
- 4.37 First Aid 51

4.38	Incidents, Emergencies and Emergency Procedures	52
4.39	Monitoring of Safety Performance	53
4.40	Hot Works including Abrasive Wheel and Soldering	57
4.41	Excavations and Buried Services	60
4.42	CDM – Sub Contractors	62
4.43	CDM – Designers	63
4.44	CDM – Principal Contractors	64
4.45	Safe Use of Mobile Elevated Working Platforms (MEWP's)	67
4.46	Overhead Power Lines	70
4.47	Contaminated Sites	72
4.48	Advice and Enforcement	79
4.49	Working Time and Fatigue	87
4.50	Occupational Health	88
4.51	Mental Health and Wellbeing	89

5.0 CONFIRMATION OF EMPLOYEE READING POLICY

6.0 UPDATES TO POLICY

Appendix 1	Blank Risk Assessment
Appendix 2	Safe System of Work
Appendix 3	Blank COSHH Assessment
Appendix 4	DSE Handout
Appendix 5	Blank Manual Handling Assessment
Appendix 6	Manual Handling Tips
Appendix 7	Training Needs Summary – Management
Appendix 8	VDU User Exercises

1.0 INTRODUCTION

Neil Farmery, the Managing Director of M&W (Woolston) Electrics Ltd, regards the successful promotion of health and safety as a mutual objective for all engaged by the company, which must be actively pursued by management and employees at every level.

It is the policy of M&W (Woolston) Electrics Ltd to conduct its undertaking in such a way as to ensure, so far as is reasonably practicable, the health, safety and welfare of all its employees whilst at work, and of any other persons not being in its direct employment who may be affected by its operations. This is regardless of whether the work is undertaken at The Old Black Bear, 502 Knutsford Road, Warrington, Cheshire, WA4 1DX, on a project under the control of M&W (Woolston) Electrics Ltd when we are the Principal Contractor or on sites where we are sub-contractors.

M&W (Woolston) Electrics Ltd recognises that the health and safety of its employees is of paramount importance both in social and economic terms, and consequently the Managing Director freely accepts the responsibilities placed on him under law. This responsibility is embodied in the Policy Statement, which shall be the basis of sound and safe practices used within the company.

Employees and others working or visiting the sites under our control will only be allowed to do so providing that they are prepared to conform to the principles and practices laid down in the Policy Statement. Likewise, employees and others who have an association with the company are required to conform to any reasonable rule or practice imposed through stature or particular requirement of any site where the company is or is due to carry out work as a Principal Contractor or sub-contractor.

It is important that everyone related to M&W (Woolston) Electrics Ltd fully understand that any failure to comply with the contents of this policy could expose the company to criminal liability. As such, any blatant or wilful disregard of the standards and arrangements set out in this policy could be viewed as gross misconduct and result in appropriate action.

2.0 GENERAL STATEMENT

M&W (Woolston) Electrics Ltd and our employees recognise the legal obligations placed on them by the Health and Safety at Work etc. Act 1974 and of any other statutory provisions and health and safety regulations applying to our activities, with regards to:

- Provision of adequate resources (money and time) to discharge our duties under health and safety
- Ensuring the Safety of all employees, public and others
- Provision of adequate control of the health and safety risks arising from our work activities.
- Provision and maintenance of plant and systems of work that are safe and without risks to health.
- Consultation with our employees including sub-contractors we may engage on matters affecting their health and safety.
- Provision and maintenance of a safe and healthy working environment with adequate welfare facilities and arrangements on projects under our control.
- Ensuring that all employees are competent to do their tasks and give them adequate training.
- Provision of maintenance of a safe means of access to and egress from all workplaces at our offices or on sites where we are the Principal Contractor.
- Prevention of incidents resulting in personal injury, property damage and cases of work-related ill health.
- The safety of; and absence of risks to health in connection with the use, handling, storage, transportation and disposal of materials and substances.
- Provision of such information, instruction, training and supervision as is necessary to ensure that work may be carried out safely, either at The Old Black Bear, 502 Knutsford Road, Warrington, Cheshire, WA4 1DX or on projects without risks to health.
- Reviewing and revising this policy at regular intervals not exceeding 12 months.

Employees and sub-contractors have a duty to co-operate in the operation of this policy by fulfilling the responsibilities placed upon them.

As stated, the operations of the company and this policy will be reviewed at regular intervals or in light of changing company circumstances, procedures and legislation. These changes will be brought to the attention of employees and others whose health and safety might be affected by such changes.

Signed:



Neil Farmery (Managing Director)

Date: 1st February 2024

Review Date: 1st February 2025

3.0 ORGANISATION AND RESPONSIBILITIES

The Managing Director of M&W (Woolston) Electrics Ltd, Neil Farmery, will make available adequate resources for the implementation and monitoring of the company Health and Safety Policy, and holds overall and final responsibility for health and safety at work. He shall also be responsible for putting in place of structures through which safety matters can be dealt effectively.

To help him achieve the health and safety standards, then maintain or improve these principles, the Managing Director has the help of all employees including;

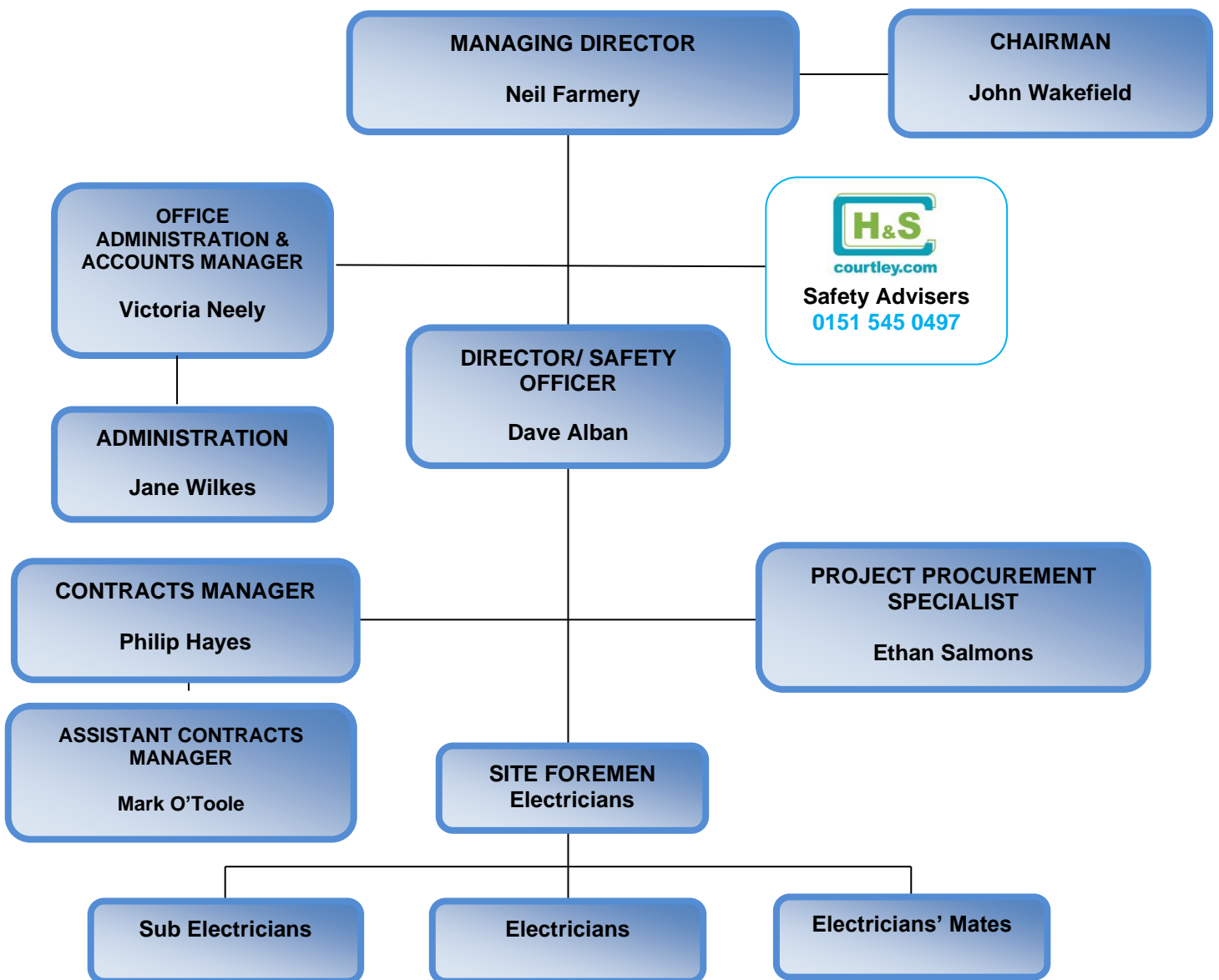
- The Contracts Manager
- The external safety adviser – (Courtley (Health & Safety) Ltd) Tel: 0151 545 0497
- Administrators.
- Foremen Electricians
- Sub Electricians
- Drivers
- All Employees

All employees have to co-operate with supervisors and managers by:

- Complying with all health, safety, environmental and quality matters,
- Not interfering with anything provided to safeguard their health and safety,
- Taking reasonable care of their own health and safety, and
- Reporting all health, safety, environmental and / or quality concerns to an appropriate person.

The expected lines of communication are expressed on the following chart however all workers have direct access to the external safety advisers who operate a strict confidentiality policy.

3.1 Structure of Company Personnel – for effective health and safety.



3.2 Managing Director

The Managing Director will initiate and administer the Health and Safety Policy. He will make adequate provision of resources for the successful implementation of the health and safety management system, including finance, time, logistics and commitment. He will also put the Health and Safety Policy into practice on a day-to-day basis to help achieve the health and safety standards. He is:

- To set a personal example at all times.
- To initiate the Company Health and Safety Policy for the prevention of injury and damage, and to set targets for the reduction of accident and incident rates.
- To know the requirements of the relevant legislation and ensure they are observed whilst carrying out Company activities.
- To arrange for funds and facilities to meet the requirements of the Company Health and Safety Policy.
- To ensure that all employees receive adequate and appropriate training to enable them to carry out their work safely.
- To initiate proper reporting procedures in the event of injury, damage and loss and to promote action to preclude re-occurrences.
- To reprimand any employee (including sub-contractors) failing to discharge satisfactorily their responsibilities regarding health and safety.
- To encourage the distribution of relevant safety information to all persons concerned.
- To promote and maintain M&W (Woolston) Electrics Ltd on-going determination to improve its performance in health, safety and welfare.
- To arrange for periodic audits of the health and safety management system through M&W (Woolston) Electrics Ltd independent safety advisers.
- Discuss with others in M&W (Woolston) Electrics Ltd management structure methods of preventing injury to any persons connected with M&W (Woolston) Electrics Ltd and possible improvements in existing working methods that effect health, safety and welfare.
- Carry out risk assessments of any operations deemed necessary prior to commencement of work and communicate the findings to personnel involved.
- With the co-operation of the Client and Principal Contractor, lay down specific site rules.
- Whilst on site, to ensure that work is carried out as per agreed method statements.
- Ensure that COSHH assessments are carried out on all new substances used on behalf on M&W (Woolston) Electrics Ltd, and the actions that are identified in these assessments will be implemented and monitored for effectiveness.
- Arrange the storage of materials to avoid possible hazards.
- Ensure that protective clothing and equipment is used correctly.

- Check equipment used on behalf of M&W (Woolston) Electrics Ltd is in good condition and fit for purpose.
- Ensure that all plant and equipment is suitable for the work it is intended for.
- Check appropriate test certificates.
- Ensure first aid and emergency equipment that is required is available.
- Report all accidents and incidents in line with Company procedures and legal requirements.
- Organise workstations / areas so that work is carried out to the required standard with minimum risk.
- Ensure that personnel working for M&W (Woolston) Electrics Ltd keep the workplace well organised and tidy.
- Accompany HM Inspectors of health and safety on any visits and arrange compliance with all recommendations made by them.

3.3 Contracts Manager

Along with the Managing Director, the Contracts Manager will put the Health and Safety Policy into practice on a day-to-day basis to help achieve the health and safety standards. He will also maintain and improve these standards.

The Contracts Manager will:

- Discuss with the Managing Director, and others in M&W (Woolston) Electrics Ltd management structure, methods of preventing injury to any persons connected with the Company and possible improvements in existing working methods that effect health, safety and welfare.
- Know the requirements of the relevant legislation and ensure they are observed whilst carrying out M&W (Woolston) Electrics Ltd activities.
- Promote and maintain the Company's on-going determination to improve its performance in health, safety and welfare.
- Carry out risk assessments of any operations deemed necessary prior to commencement of work and communicate the findings to personnel involved.
- With the co-operation of the Client and Principal Contractor, lay down specific site rules.
- Whilst on site, to ensure that work is carried out as per agreed method statements.
- Ensure that all employees receive adequate and appropriate training to enable them to carry out their work safely.
- Ensure that COSHH assessments are carried out on all new substances used on behalf on M&W (Woolston) Electrics Ltd and the actions that are identified in these assessments will be implemented and monitored for effectiveness.

- Arrange the storage of materials to avoid possible hazards.
- Ensure that protective clothing and equipment is used correctly.
- Check equipment used on behalf of M&W (Woolston) Electrics Ltd is in good condition and fit for purpose.
- Ensure that all plant and equipment is suitable for the work it is intended for.
- Check appropriate test certificates.
- Ensure that any necessary training is provided prior to use.
- Initiate proper reporting procedures in the event of injury, damage and loss. Promote action to preclude re-occurrences.
- Ensure first aid and emergency equipment that is required is available.
- Report all accidents and incidents in line with Company procedures and legal requirements.
- Organise workstations / areas so that work is carried out to the required standard with minimum risk.
- Ensure that personnel working for M&W (Woolston) Electrics Ltd keep the workplace well organised and tidy.
- Accompany HM Inspectors of health and safety on any visits and arrange compliance with all recommendations made by them.

3.4 Safety Advisor

The Directors of M&W (Woolston) Electrics Ltd have appointed Courtley (Health & Safety) Ltd as independent safety advisers to the company. All workers have free and easy access to the safety advisers and support staff of Courtley (Health & Safety) Ltd who provide the following services:

- Access to competent health and safety advice for all employees.
- Advice and help to produce a clearly defined and workable company Health and Safety Policy.
- Information through newsletters, safety alerts and memos supplying updates and advice in respect to changes in health and safety legislation, procedures and industry best practice as they might affect M&W (Woolston) Electrics Ltd.
- The availability of health, safety and welfare site inspections at the locations where M&W (Woolston) Electrics Ltd employees work. These include detailed reports with a clear action plan to address any issues identified.
- Free access to regular safety related training sessions.

3.5 Administration Staff

Although we might not consider the office environment to be as potentially hazardous as the other activities of M&W (Woolston) Electrics Ltd, the people who work here have an important role in ensuring the success of our safety management system.

Their duties in respect to health and safety include the following:

- Dress appropriately for work ensuring that clothing, particularly the footwear is suitable for a working environment. Consider the floor coverings, stairs and tasks such as carrying mail or stationery.
- Not to use and report any defects in equipment immediately to a Working Foreman or Neil Farmery.
- Ensure that the following information is displayed in an appropriate location;
 - The Health and Safety Law Poster
 - Action to take in the event of evacuation
 - Current Employers and Public Liability Insurance Certificate
 - Name of the First Aider and location of the first aid kit.
- Ensure all access routes and doorways about the office areas are kept clear and free from obstruction.
- Do not lift or carry anything that might be too heavy or awkward. This includes not over stretching to place or retrieve stock or materials from on top of high shelves or cupboards.
- If appropriate, suggest ways of eliminating hazards and improving working methods to Working Foreman, Neil Farmery or the Safety Advisers.
- Warn new employees, particularly young people, of known hazards.
- Keep records of the following in a safe and retrievable manner;

Documents

	Keep for
○ Accident Book	7 years
○ Employers and Public Liability Insurance Certificate	40 years
○ Individual Training Records	10 years
○ Risk Assessments	Until revised
○ COSHH Assessments	Until revised
○ Manual Handling Assessments	Until revised
○ Method Statements	3 years after end of job
○ Scaffold Inspection records	3 years after end of job
○ Workplace Health, Safety and Welfare Inspections	3 years
○ Test Certificates of Plant and Equipment	3 years
○ PPE Issue register	3 years
○ Inspection registers	3 years
○ List of 'Approved' suppliers	Ongoing

3.6 Foremen Electricians

The Foremen Electricians are responsible for securing health and safety relating to their particular contract, planning, designing and ensuring compliance with statutory requirements, and for ensuring that instructions issued by the Client are complied with.

The Foremen Electricians will:

- Implement the Company Health and Safety Policy to promote a healthy and safe working environment and incorporate safety instructions when issuing directions.
- Carry out risk assessments of any operations deemed necessary prior to commencement of work and communicate the findings to personnel involved.
- Liaise with other management in order to maintain and monitor safe working methods.
- With the co-operation of the Client and Principal Contractor, lay down specific site rules including the correct use of protective equipment.
- Ensure that all employees receive adequate and appropriate training to enable them to carry out their work safely.
- Arrange the storage of materials to avoid possible hazards.
- Check equipment used on behalf of M&W (Woolston) Electrics Ltd is in good condition and fit for purpose.
- Ensure that any necessary training and appropriate test certificates are provided prior to use.
- Discuss with other management methods of preventing injury to any persons connected with M&W (Woolston) Electrics Ltd and possible improvements in existing working methods that affect health, safety and welfare.
- Initiate proper reporting procedures in the event of injury, damage and loss and promote action to preclude re-occurrences.
- Ensure first aid and emergency equipment that is required is available, and when necessary report all accidents and incidents in line with Company procedures and legal requirements.
- Ensure that protective clothing and equipment is used correctly.
- Whilst on site, ensure that work is carried out as per agreed method statements.
- Organise workstations / areas so that work is carried out to the required standard with minimum risk.
- Ensure that work is carried out with the proper equipment and that there is sufficient equipment on site for the safe working of the site, reporting any shortage or defects to the Managing Director and Contract Managers.
- Ensure that any necessary information on known hazards and the need for taking safety precautions is passed on to all relevant employees.

- Maintain a system of "good housekeeping" to ensure that work areas are kept as clean and tidy as possible to reduce hazards in an endeavour to maintain a safe place of work.

3.7 Drivers

For M&W (Woolston) Electrics Ltd to carry out their work effectively it is necessary for our employees to visit various sites and projects. Whether the vehicle is owned by the driver, the company or is hired it is the responsibility of the driver to ensure that the vehicle is roadworthy. People who drive on behalf of M&W (Woolston) Electrics Ltd must:

- Visually inspected the vehicle prior to use. Do not use any vehicle if it is not roadworthy.
- Observe the Highway Code while driving on behalf of M&W (Woolston) Electrics Ltd.
- Inform a Foreman immediately in the event of them becoming unfit to drive. This could be through endorsements, medication or any other event.
- Report any defects found to the manager responsible for authorising repairs.
- Complete a Vehicle Users Form on a weekly basis and return them to the head office on a monthly basis.
- Do not use a handheld mobile telephone to take or receive calls while driving.
- Do not drive if you feel tired or unwell.

3.8 All Employees

All employees have a part to play in securing safety standards and a duty to co-operate with M&W (Woolston) Electrics Ltd and other employers in all matters relating to health and safety at work. The personal responsibilities for each employee under the Health and Safety at Work Act etc. 1974 are:

- To take reasonable care of the health and safety of himself, and any other person who may be affected by their acts or omissions whilst at work.
- Not to interfere with or misuse anything provided in the interests of health, safety or welfare.

To this end all employees of M&W (Woolston) Electrics Ltd will:

- Stop work immediately in the event of them feeling unsafe. Report their concerns as soon as they are noticed to an appropriate person. In the first see the attached chart or call your Safety Adviser on 0870 300 8174.
- Work in a safe manner and refrain from horseplay.
- Comply with warning signs and notices or instructions displayed and advise management if they do not understand them.
- Use tools and equipment appropriate to the job and ensure that they are kept in good condition.

- Make full use of safety equipment and protective clothing provided.
- Report unsafe situations, conditions and defects in plant or equipment
- Report any incidents involving personal injury, property damage or 'near miss that could have resulted in such an event.
- Suggest ways of improving safety to company management when appropriate.
- Not operate any item of plant unless they are competent and authorised to do so.
- Not undertake any tasks that they feel they are not competent to carry out, or which involve unreasonably high risks.
- Find out who the first aider is, where first aid is available and what to do in an emergency or if fire breaks out at the earliest opportunity on sites.
- To let managers or the Safety Advisors know if they do not understand or agree with any of above requirements.

4.0 ARRANGEMENTS

4.1 Risk Assessments

Everyone at M&W (Woolston) Electrics Ltd is aware that there are risks to health and safety arising from work activities. To help control these we formally assess risks arising from our activities. We undertake and retain risk assessments as either generic that cover our routine working practices and would apply anywhere or specific to a more unusual task, activity or site.

Refer to Procedure 1 to make sure that both of these are performed using the risk assessment format in the appendices by a responsible person or team.

4.2 Control of Substances Hazardous to Health (COSHH)

We accept that the activities of M&W (Woolston) Electrics Ltd will sometimes require our workers to come into contact with substances that can be hazardous to health. It is important that our workers know what these are and how to control the risks presented by the substances. Many of these will be identifiable through experience, common sense or deemed to be hazardous through legislation. A responsible manager who has been suitably trained will carry out assessments on the potentially hazardous substances we encounter. This will determine the control measures we need to employ to ensure the safe handling, use, storage, and disposal of the substances and of what to do in case of emergencies. For most substances we encounter, a lot of the information we need for the assessment will come from manufacturers or supplier's product and safety data sheets.

Refer to Procedure 2 for further information. The format we use to carry out the assessment is in the appendices and a responsible manager should follow this format.

4.3 Manual Handling

We at M&W (Woolston) Electrics Ltd accept that our work requires people to lift and carry items. We also understand that a significant number of personal injury incidents are attributable to such activities. We will provide guidance as detailed in the appendices to all workers expected to carry out significant handling operations. Where we cannot remove significant manual handling tasks we will try and use mechanical methods to reduce manual handling, if this is not possible, they will be assessed by a responsible manager using the manual handling assessment form included in the appendices.

Refer to procedure 3 for further information.

4.4 Safe Systems of Work

To achieve the standards that we have set out in our health and safety policy statement we have set out clear procedures, method statements or safe systems of work.

Refer procedure 4 for further information.

4.5 purchase and Hiring Equipment

M&W (Woolston) Electrics Ltd will ensure that only suitable and safe equipment and machinery is purchased or hired.

Refer to procedure 5 for further information.

4.6 Health and Welfare Facilities

It is incumbent upon M&W (Woolston) Electrics Ltd to ensure all workers have access to suitable welfare facilities wherever they are engaged. The company is aware it has an obligation, and we have a defined procedure detailing the requirements that will be adhered to.

Refer to procedure 6 for further information.

4.7 Information, Training, Supervision and Competency

We aim to ensure that every person who undertakes work on behalf of M&W (Woolston) Electrics Ltd is fully competent to carry out their work.

We understand there is a need to train our employees on a regular basis to ensure that they are competent to fulfil their position within the company and to carry out work safely.

On initial employment or following re-assignment M&W (Woolston) Electrics Ltd will give all new employees induction training.

The Responsible Manager will identify further training with regard to experience and the task as identified.

Please see procedure 7 for further details.

4.8 Consultation / Communication with Employees

At M&W (Woolston) Electrics Ltd we are fully aware for the need to communicate at all levels. Good communication provides a solid backbone in any management system. We have detailed the arrangements we set out in order to achieve regular consultation and communication with employees which includes the role of the Health & Safety Committee and requirements where non-English speaking workers may be affected by activities of M&W (Woolston) Electrics Ltd.

Refer to procedure 8 for further information.

4.9 Display Screen Equipment (DSE)

The prolonged or inappropriate use of DSE can attribute to work related upper limb disorders (WRULD) or repetitive strain injury (RSI). We will protect our employees who use such equipment for a significant part of their work from these effects as far as we reasonably can.

Refer to procedure 9 for further information.

4.10 Plant and Equipment including Portable Appliance Testing (PAT)

M&W (Woolston) Electrics Ltd understands that equipment will need inspecting from time to time and were identified by manufacturers, suppliers or others. A register will be kept of all equipment to ensure that inspections are completed as recommended.

Refer to procedure 10 for further information.

4.11 Working at Height

Working is said to be 'at height' if a person could be injured falling from it, even if it is at or below ground level. M&W (Woolston) Electrics Ltd will strive to ensure, as far as is reasonably practicable, that employees working at height do so in a way that is safe and secure.

Refer to procedure 14 for further information.

4.12 Safe Use of Ladders

Ladders or stepladders will be chosen for working at height only if they are deemed to be the correct equipment for the task in hand.

If you are required to use this access equipment as part of your duty refer to procedure 15 for further information.

4.13 Mobile Tower Scaffolds

There are a number of prefabricated towers available that are used by M&W (Woolston) Electrics Ltd. The manufacturer or hire company from where we have sourced the towers should provide an adequate instruction manual or erection guide for each particular type.

Refer to procedure 16 for further information.

4.14 Roof Works

Roof works are known as a high-risk activity and M&W (Woolston) Electrics Ltd know that it is important that all roof work operations are pre-planned.

Refer procedure 17 for further information

4.15 Drivers of Cars and Vans & Responsibilities

M&W (Woolston) Electrics Ltd understands that it has a responsibility to purchase or hire suitable vehicles and they will need inspecting, servicing and maintenance from time to time in line with the recommendations of manufacturers.

Employees that drive vehicles on behalf of M&W (Woolston) Electrics Ltd, whether owned or hired by the company or the driver must observe the Highway Code.

Refer to procedure 18 if your job role requires you to drive on company business.

4.16 Electricity

M&W (Woolston) Electrics Ltd knows that unlike most other hazards that can be seen felt or heard, there is no advance warning of danger of electricity.

Refer to procedure 20 for further information.

4.17 Lead

Lead can enter the body in many forms including dust, fumes or vapours. Exposure to lead can cause various effects on the body.

Refer to procedure 21 for further information and the symptoms of exposure to lead.

4.18 Asbestos

M&W (Woolston) Electrics Ltd recognises that work with asbestos and materials containing asbestos can be dangerous and that every precaution must be taken to ensure that anyone who may be affected by such work is protected.

Refer to procedure 22 for further information.

4.19 Vibration

Employees of M&W (Woolston) Electrics Ltd are expected to use plant and equipment that has the potential to cause damage to their health such as hand-arm vibration syndrome (HAVS) or vibration white finger (VWF) which is also known as Reynaud's Syndrome or whole-body vibration through the use of ride on equipment. Workers who experience 'pins and needles' when using equipment or those who suffer with fingertips becoming pale with a loss of feeling usually set off during cold are to inform their Supervisor without delay.

Refer to procedure 23 for further information.

4.20 Mobile Phones and Satellite Navigation Systems

M&W (Woolston) Electrics Ltd will ensure that all operatives using Mobile Phones and/or Satellite Navigation Systems have read and understood procedure 24.

4.21 Young Persons

Where young persons, under the age of eighteen years, are employed a risk assessment will be conducted and it will take particular interest in the lack of experience, lack of awareness of risks and immaturity of the young person. Risk assessments will focus on various hazards in relation to young persons.

Refer to procedure 25 for further information.

4.22 Visitors to Site

When the company endeavours that they will have visitors to sites they are working on, they will ensure that procedure 26 is followed.

4.23 Lone Workers

M&W (Woolston) Electrics Ltd will ensure prior to being requested that the worker is competent and able to work alone. In addition, all lone workers must be fit and healthy, and will undergo medical assessments on a regular basis.

If your job role requires lone working refer to procedure 28 for further information.

4.24 Protection of the Public

Areas open to members of the public will be inspected regularly to identify and remedy any failings in standards of housekeeping or safety.

Refer to procedure 29 for more information regarding open areas to the public.

4.25 Contractor Control

When M&W (Woolston) Electrics Ltd uses sub-contractors, they will work to the same standards as the people who are directly employed by the organisation. The sub-contractors used will be either bona fide organisations or suppliers of labour only.

Should any sub-contractor or employee of a sub-contractor have any concerns regarding health and safety performance on any M&W (Woolston) Electrics Ltd project they are to raise this with the Supervisor. The Supervisor will then investigate and act appropriately on any concerns raised.

Refer to procedure 30 for further information regarding contractor control.

4.26 Personal Protection Equipment (PPE)

M&W (Woolston) Electrics Ltd maintains a suitable stock of the various types of PPE used on behalf of the company. This is to ensure the ready availability of the most commonly used equipment.

Refer to procedure 31 for more information regarding PPE.

4.27 Respiratory Protection

M&W (Woolston) Electrics Ltd will ensure that all personnel are provided with the correct respiratory protection dependent upon the risk.

Refer to procedure 32 for further information.

4.28 Noise

All operations or work environments where M&W (Woolston) Electrics Ltd are engaged where there is the potential for excessive noise are to be considered and assessed to determine the level of risk. We will consider the type and duration of the noise.

Refer to procedure 34 for more information on noise and its exposure.

4.29 Drugs and Alcohol

It is the responsibility of all M&W (Woolston) Electrics Ltd management and employees to ensure that the persons in their control are not under the influence of drugs or alcohol whilst in the workplace. Any employees who feel they, or a colleague are under the influence of drugs or alcohol must make this known to their manager at the earliest opportunity.

Refer to procedure 35 for more information relating to drugs and alcohol.

4.30 Dermatitis

Dermatitis is the result of a reaction between the skin and harmful substances that it comes into contact with. The prevention is simple. Ensure that contact with the harmful substance is avoided by using an alternative substance or protective clothing. Good hygiene and barrier creams are also an effective means of prevention.

Refer to Procedure 36 for more information regarding substances you may come into contact with.

4.31 Leptospirosis (Weil's disease)

Whenever we work in any areas where there is likely to be contamination by rat urine, notably near to rivers, sewers or in rat infested premises there will be a significant risk of infection. Weil's disease is a potentially fatal infection. The bacteria can enter your body through the mouth, eyes, cuts and scratches.

Refer to procedure 37 regarding Leptospirosis and how to avoid it.

4.32 Psittacosis

Where operatives might come into contact with birds or bird droppings, a risk assessment will be completed and will be discussed with all those on site by the Supervisor.

If you are at risk of coming into contact with the above, please refer to procedure 38.

4.33 Tetanus

M&W (Woolston) Electrics Ltd is aware that when breaking new ground, construction workers are at risk from organisms infecting wounds.

Refer to procedure 39 for more information regarding to tetanus.

4.34 HIV or Hepatitis

Where refurbishment work is carried out in areas where there is knowledge or expectation of drug abuse there is likelihood that drug related paraphernalia might be discarded.

If your job role puts you at risk of being in areas of drug abuse refer to procedure 40 for more information regarding HIV or Hepatitis.

4.35 Stress

M&W (Woolston) Electrics Ltd is committed to protecting the health, safety and welfare of its employees, and recognises that workplace stress is a health and safety issue. Because of this, M&W (Woolston) Electrics Ltd acknowledges the importance of identifying and reducing sources of stress in the workplace.

Refer to procedure 41 for further information regarding stress in the workplace and how to reduce it.

4.36 Smoke-free Policy including e-Cigs

It is the policy of M&W (Woolston) Electrics Ltd that all our workplaces are smoke-free, and all employees have a right to work in a smoke-free environment. Smoking is prohibited in all enclosed and substantially enclosed premises in the workplace.

Refer to procedure 42 for more information.

4.37 First Aid

The first aid boxes are maintained inside each company vehicle. One is also located in head office – The Old Black Bear, 502 Knutsford Road, Warrington, Cheshire, WA4 1DX.

The nominated first aider should refer to procedure 51 for further information.

4.38 Incidents, Emergencies and Emergency Procedures

While M&W (Woolston) Electrics Ltd will make every effort to avoid incidents or emergencies we recognise that such events can occur. We have set in place the following procedure for all incidents whether they result in injury, work related disease, property damage or are a near miss that has the potential for such a loss. All employees should know the correct procedure for incidents and emergencies and reporting them.

Refer to procedure 52 for further information.

4.39 Monitoring of Safety Performance

The conditions that we work in, affects our productivity and quality of work that we produce. Therefore M&W (Woolston) Electrics Ltd will ensure that working conditions and the environment are well organised and safe.

Refer to procedure 53 for further information.

4.40 Hot Works including Abrasive Wheels and Soldering

All abrasive wheel and soldering equipment will be inspected by a competent person before use. Any equipment that is suspected to be faulty will not be used and a person of authority will be informed without delay.

If your job role requires you to use abrasive wheels for hot works refer to procedure 57 for further information.

4.41 Excavations and Buried Services

All excavation work will be under the direct supervision of a competent person. They will take into consideration the variation of the nature of ground. Some soil is like fine sand in that it flows easily, and other soils are like stiff clay and are more cohesive.

Refer to procedure 60 for more information on Excavations and Buried Services and M&W (Woolston) Electrics Ltd.'s responsibilities.

4.42 CDM – Sub contractor

M&W (Woolston) Electrics Ltd are often engaged as Contractors as defined by the Construction (Design and Management) Regulations 2015. As such, we are aware that under the regulations, we must cooperate with the Principal Contractor, and provide the Principal Contractor with any relevant information which might affect health and safety whilst on the project.

Refer to procedure 62 for more information.

4.43 CDM – Designers

M&W (Woolston) Electrics Ltd is often involved as Designers as defined by the Construction (Design and Management) Regulations 2015 and as such has their part to play looking after their own health and safety and in improving the industry's health and safety record.

More information on CDM – Designers can be found in procedure 63.

4.44 CDM – Principal Contractor

M&W (Woolston) Electrics Ltd is often engaged as Principal Contractor as defined by the Construction (Design and Management) Regulations 2015 and as such is in control of the construction phase of projects.

Refer to procedure 64 for more information.

4.45 Safe Use of Mobile Elevated Working Platforms (MEWP's)

All M&W (Woolston) Electrics Ltd employees that will use MEWP's will be trained and familiar with the performance and controls of the MEWP are that they are going to use.

Refer to procedure 67 for further information if your job role requires you to use MEWP's.

4.46 Overhead Power Lines

Generally, electricity supplies above 33,000 volts are routed overhead; below this voltage they may be overhead or underground. It is known to the company that overhead lines are normally not insulated and can be lethal if contact or near contact is made; electric arcs may jump a considerable distance.

Refer to procedure 70 if you are at risk of coming into contact of overhead power lines.

4.47 Contaminated Sites

M&W (Woolston) Electrics Ltd is aware that in the future more and more work will be carried out on "brown field" sites, which in some cases have become contaminated by the residues from industrial activities.

Refer to procedure 72 for further information if your work activity puts you at risk of being in a contaminated site.

4.48 Advice & Enforcement

M&W (Woolston) Electrics Ltd employ an external health and safety adviser. They are:

Courtley (Health & Safety) Ltd
5 Platinum Court
Alchemy Way
Knowsley, L33 7XN
Tel: 0151 545 0497
Web: www.courtley.com
E-mail: info@courtley.com

Courtley (Health & Safety) Ltd has access to the Merseyside Occupational Health and Safety Group that is affiliated to RoSPA.

- Access to the Merseyside and Cheshire Safety Group through the safety advisers.
- Members of the Association of Project Safety.
- Members of the Institute of Occupational Safety and Health.
- The services of the HSE and EMAS are used.

Refer to procedure 79 for further information regarding advice and enforcement.

4.49 Working Time and Fatigue

M&W (Woolston) Electrics Ltd understands that it has a responsibility and duties in relation to working time to avoid exhaustion or fatigue and will give employees enough breaks to make sure their health and safety isn't at risk.

Please refer to procedure 87 for further information.

4.50 Occupational Health

Everyone at M&W (Woolston) Electrics Ltd is aware that there are risks to health and safety arising from work activities. To help control these we formally assess risks arising from our activities. We undertake and retain Health Surveillance that cover our routine working practices and would apply anywhere or specific to a more unusual task, activity or site.

Please see procedure 88 for more information.

4.51 Mental Health

M&W (Woolston) Electrics Ltd is committed to protecting the health, safety, and welfare of its employees, and recognises that we must treat mental health problems seriously. Identify issues and work with the employee to resolve them. We will support all staff faced with mental health issues. And strive to maintain a healthy environment that staff feel comfortable, safe, and happy to work in. Because of this, M&W (Woolston) Electrics Ltd acknowledges the importance of identifying and reducing issue that could be detrimental to our employee's good mental health in the workplace.

Refer to procedure 89 for further information regarding Mental Health in the workplace and how to support staff.

5.0 CONFIRMATION OF EMPLOYEE READING POLICY

To be completed by ALL Personnel

I _____(Name in BLOCK CAPITALS)

I confirm that I have read the Company Health and Safety Policy and fully understand the responsibilities that apply to me in the capacity in which I am employed. If I am unable to fulfil those responsibilities in any way, I will inform my manager, or the Managing Director as soon as is reasonably practicable.

Signed: _____ Date: _____

PLEASE COMPLETE THIS PAGE AND RETURN IT TO HEAD OFFICE

6.0 UPDATES TO POLICY

Rev	Item	Changes	Authorised	Date